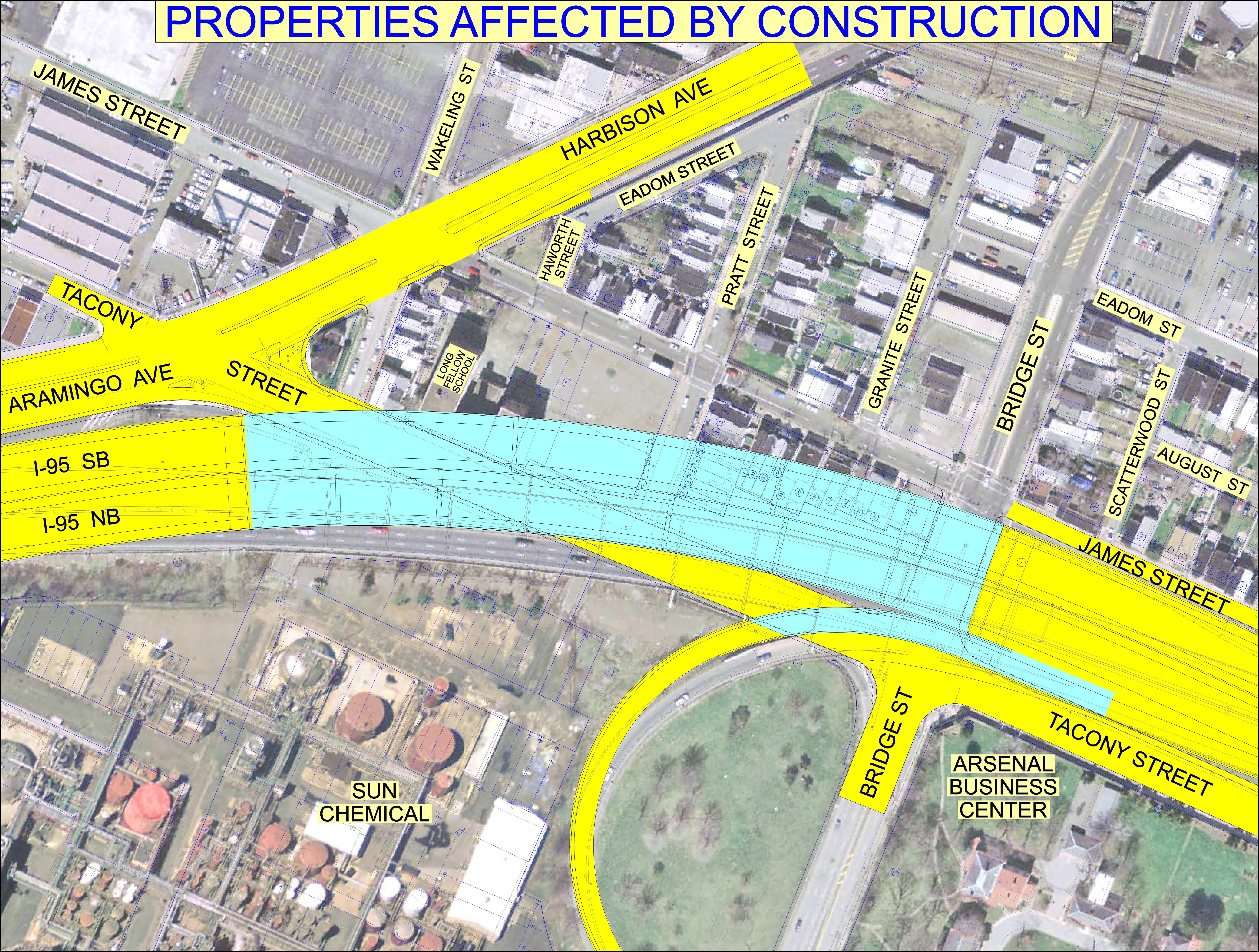


PROPERTIES AFFECTED BY CONSTRUCTION



JAMES STREET

WAKELING ST

HARBISON AVE

EADOM STREET

PRATT STREET

HAWORTH STREET

GRANITE STREET

BRIDGE ST

EADOM ST

SCATTERWOOD ST

AUGUST ST

JAMES STREET

TACONY

STREET

ARAMINGO AVE

I-95 SB

I-95 NB

LONG FELLOW SCHOOL

SUN CHEMICAL

BRIDGE ST

ARSENAL BUSINESS CENTER

TACONY STREET